

## EMERGENCY RESPONSE

# Fire-Rated Counter Shutters

MODEL ERC10

Fire-rated rolling counter shutters, also known as fire-rated counter doors, secure openings using smaller (and more aesthetically pleasing) guides, slats, brackets and hoods than traditional rolling fire doors. Rated counter shutters protect interior corridors and create barriers for openings where life safety is a priority and can fully close to the floor when compact door components are desired.

### Fire-Rated Counter Shutters:

- + Built to order. Fits specific dimensions up to 16' W x 7' 6" H or 12" W x 10" H
- + Push-Up, Motor, Tube Motor or Crank available
- + Use in rated walls: masonry or drywall with metal or wood studs
- + 3, 1½ and ¾ hour UL label available

### OPERATION:

FireGard™ operated counter fire shutters are activated by fusible link and are appropriate when connection to an alarm system or local detector is not required. Spring tension is not released upon activation, and chain, crank and motor operation is available.

AlarmGard™ operated counter fire shutters are activated by alarm or local detectors and directly wired into the building's systems. Available in chain, crank and motor operated units, AlarmGard operated counter fire shutters will automatically close during alarm activation at a safe and controlled rate. This type of operation is recommended for applications requiring frequent testing or when it is difficult to access the operating mechanism.

AlarmGard Tube Motor operated counter fire shutters are also activated by alarm or local detectors and directly wired into the building's systems. Tube motors are concealed in the counter fire shutter's shaft assembly, ideal for openings with tight clearances. The operator and drive components are neatly concealed, avoiding the need for bulky covers. Spring tension is not released upon activation, which means simple closing system testing and resetting.

### ADDITIONAL CONFIGURATIONS & OPTIONS:

Fire rated counter shutters are also available with a factory-welded, integral frame and sill configuration to provide a custom, built-in look. Simplified construction of integral frame units makes for fast and easy installation, saving time and money for contractors and building owners. 1 ½ or ¾ hour labels available with integral frame and sill units.

Optional SmokeShield® smoke and draft control is designed and tested to slow oxygen to the fire source and contain harmful smoke.



Rated Counter Shutter with SmokeShield® Draft and Smoke Control (top)

Rated Counter Shutter (middle)

Rated Counter Shutter with Integral Frame and Sill with SmokeShield Draft and Smoke Control (left)

## BENEFITS

- + Most standard counter fire shutters ship within in one to two weeks
- + UL Labeled: up to 3 hours
- + Size Flexibility: Each unit is built to exact opening size requirements
- + Compact Storage: Curtain wraps in coil supported by side guides
- + Durability: Commercial duty design; little to no routine maintenance

## APPLICATIONS

- (fire rated walls)
- + Cafeterias
  - + Educational Facilities
  - + Healthcare Facilities
  - + Hospitality/Public Spaces

**CORNELL**  
Innovative door solutions.™

# COMPONENTS

## Brackets

Minimum 12 ga. steel plates bolted to guide assembly and support the counter balance shaft and curtain  
**Standard Material & Finish:** Steel powder coated in Gray or Tan

## Hood

Protective sheet metal enclosure for the curtain that provides fire resistance at the head of the unit and keeps the brackets rigid  
**Standard Material and Finish:** Galvanized steel with exclusive GalvaNex™ finish in Gray or Tan  
**Optional Material:** Stainless steel with #4 finish

## Counterbalance Shaft

3" minimum diameter outer shaft and 3/4" minimum inner shaft. This assembly supports the curtain and contains counterbalance torsion springs for assisting operation.  
**Standard Material:** Steel

## Operation

Push-up operation shown. Hand crank, motors and tube motors are available. Doors operate by rotating the shaft gear end. The opposite end of shaft applies spring tension and is equipped with a spring adjusting wheel.

## Guides

Side rail assemblies that bolt to the wall (maximum 18" bolt spacing as per UL procedure) and support the entire weight of the unit  
**Standard Material & Finish:** Steel powder coated in Gray or Tan  
**Optional Material:** Stainless steel with #4 finish  
Additional trim piece for Between Jamb Mounted guides available for enhanced aesthetics.

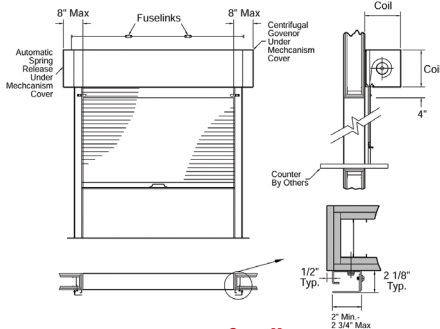
## Curtain

Interlocking roll formed flat-faced 1 1/2" high slats with galvanized steel endlocks riveted to ends of alternate slats to maintain curtain alignment and prevent wear  
**Standard Material & Finish:** 22 ga. galvanized steel with exclusive GalvaNex finish in Gray or Tan  
**Optional Material:** 22 ga. stainless steel with #4 finish

## Bottom Bar

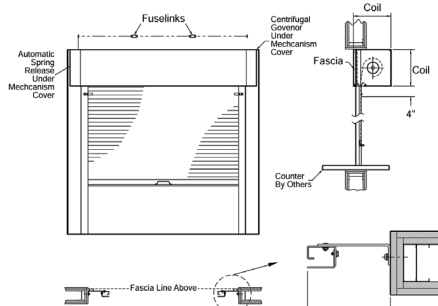
Reinforcing member attached to the bottom of the curtain with a vinyl astragal seal to cushion the contact point on the counter. Single angle provided with slide bolt locking (shown), single angle with bent trim piece provided with cylinder locks  
**Standard Material & Finish:** steel with SpectraShield® powder coating Cornell gray or tan with galvanized steel curtain or #4 finish stainless steel with stainless steel curtains.

## MOUNTING & CLEARANCES



### Face of Wall

Maintains clearance of full opening, minimal exposed components



### Between Jambs

Mounts within the opening, fascia (front hood closure piece) required

Counter Fire Shutters are built to order to fit openings up to 16' wide when height is 7' 6" or less or openings up to 12' wide when height is 10' or less. Coil sizes range from 8" to 14" depending on unit size, material and operation. Consult factory when coil size is critical.

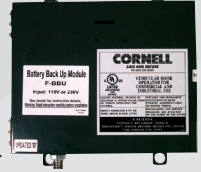
## SPECIAL FEATURE OPTIONS

### + UL 1 1/2 Hour Labeled Countertops:

14 ga. #4 finish stainless steel type  
304 countertops available up to 11' 10" wide, 25 1/4" deep. Plastic laminate countertops are available up to 18' wide, 48" deep, in a range of standard laminates.

### + Battery Backup Devices

prevent the door from closing due to a power failure for a minimum of 4 hours. AlarmGard operators also function as a DC power source for local warning devices and detectors to keep them functioning during a power outage.



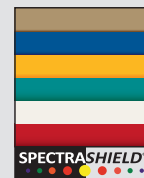
**Annunciators** provide a visual and/or audible advanced warning when the fire shutter is about to close. These safety devices can be activated upon alarm signal or loss of power when supported by a battery backup device.

- + SmokeShield® smoke and draft control
- + UL 325 compliant ELR sensing edge for motorized units
- + Operator covers for exterior mounted units or exposed operators
- + Cylinder or slide bolt locking
- + Sill angles

## OPTIONAL FINISHES

- + Powder coat finish in selected color
- + Zinc Rich Gray corrosion resistant powder coating
- + Hot-dip galvanizing on steel components

## SPECTRASHIELD® POWDER COAT FINISH



Cornell's SpectraShield Powder Coat Finish in a choice of more than 180 colors adds durability and aesthetic value. Surface preparation and coating process produces a smooth, lasting finish at controlled costs.

# CORNELL

Innovative door solutions.™

CornellCookson, Inc.  
24 Elmwood Avenue, Mountain Top, PA 18707  
TEL 800.233.8366  
Architectural Design Support: Ext. 4551  
Website: [www.cornelliron.com](http://www.cornelliron.com)  
Email: [ADS@cornelliron.com](mailto:ADS@cornelliron.com)

An ISO 9001:2008 Registered Company

12718 E Indiana Ave  
Spokane, WA 99216  
(509) 921-2260 • (509) 921-509 Fax  
[www.continentaldoorco.com](http://www.continentaldoorco.com)

