

# PFC-20 Counter Shutter



# PFC-20 Counter Shutter



The PFC-20 model counter shutters manufactured by Alumatec Pacific™ are an ideal choice for both interior and exterior counter top applications including stadiums, schools, hospitals, and cafeterias. The enclosed curtain provides top security by minimizing visibility and eliminating reach-through theft and vandalism. Built using solid aluminum interlocking slats, counter shutters promise a clean, smooth look and easy operation for any application.

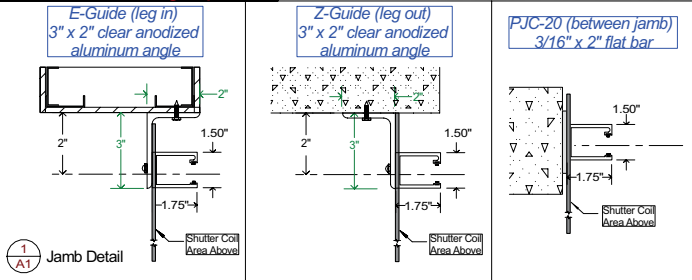
## Standard Features:

- 100% enclosed curtain.
- Solid aluminum interlocking slats.
- Interior thumb-turn locking on bottom bar.
- Barrel and spring assembly with minimum 15,000 cycle life spring.
- 10' square head plates with a high quality, pressed and sealed bearing.
- Manual operation for doors up to 50 square feet. Larger shutters to be crank or motor operated.
- Inside tension and drive (standard) with retractable drive shaft for ease of installation.

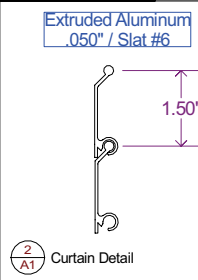


# Design Specifications

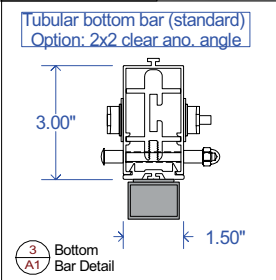
## Guide Mounting Options



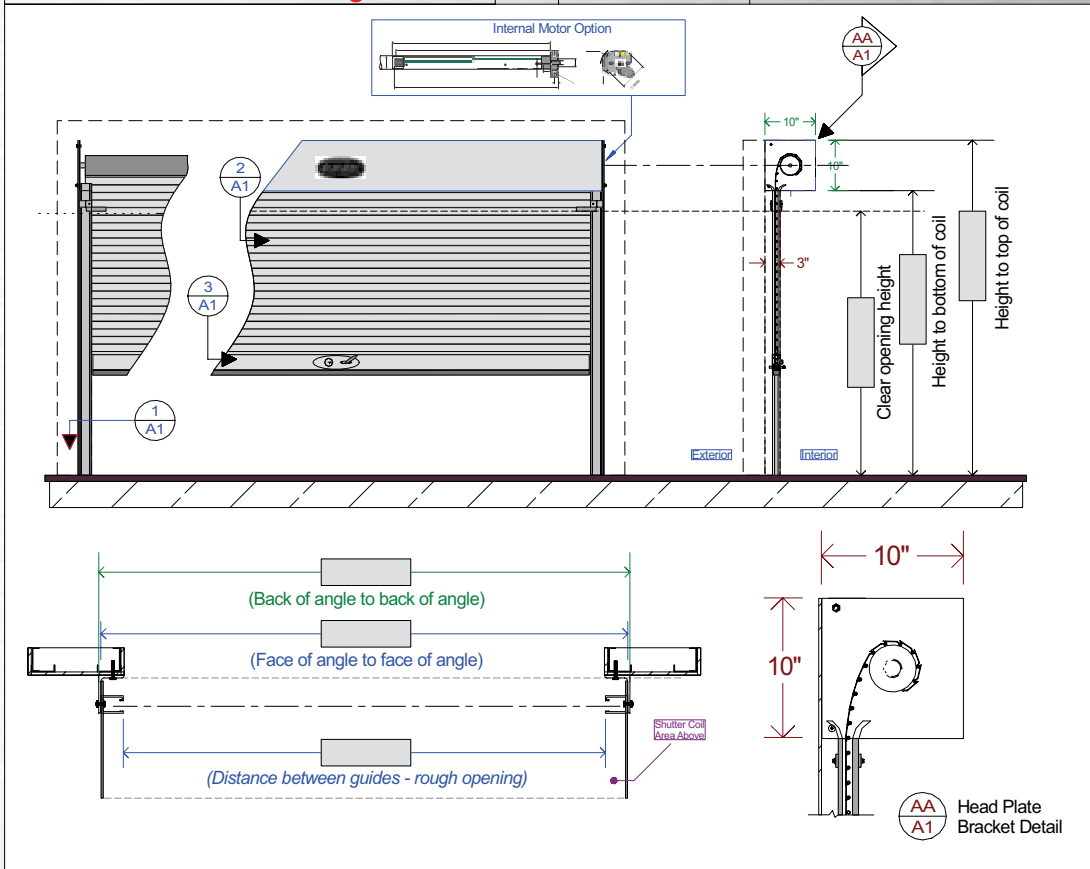
## Slat Profile



## Bottom Bar



## Counter Shutter Drawing Details



## Available Finishes

	Clear	Bronze	Black	Wood Grain	Powder Coat
Aluminum Curtain	Standard	✓	✓	Med. Tan Oak	* ✓
Bottom Bar & Guides	✓	✓	✓	✓	✓

\*\*See our website for complete choice of Powder Coat color options\*\*

# Alumatec Pacific Products™ Model: PFC-20 / PJC-20 (Roll-Up Counter Shutter)

## **PART 1 GENERAL**

### **1.01 SUMMARY**

- A. Aluminum rolling counter shutter manufactured by Alumatec Pacific Products™ is as shown on this submittal.  
B. Design, construction and preparation of openings, access panels, field wiring, wire conduit, fuses, disconnect switches, finish or field painting are excluded (unless powder coat finish is provided).

### **1.02 SYSTEM DESCRIPTION**

- A. Rolling shutters are designed for standard cycle usage, with 15,000 cycle life spring and bearing assemblies.

### **1.03 WARRANTY**

- A. Limited (see warranty sheet) one year from date of shipment – warranty does not apply to finishes.

## **PART 2 PRODUCTS**

### **2.01 MANUFACTURER**

- A. Alumatec Pacific Products™: 1155 West 500 North, Centerville, UT 84014 – www.alumatecpp.com  
B. Sales Department: 801.298.0181 ext 1 or Toll Free 877.770.0181 ext 1

### **2.02 MATERIALS**

- A. **Curtain** is assembled from horizontal extruded aluminum interlocking solid slats, from .050 gauge pure US billet (6063-T5) aluminum. Standard finish to be commercial clear satin anodized. Alternate slats shall be fitted with stamped zinc plated end locks, with wind / security lock to prevent shutter from being extracted from guides on openings over 10 feet wide.

- B. **Hood:** .040 clear satin anodized aluminum hood cover to finish coil area. Neatly formed with beads or flanges to prevent deflection, and conceal bottom bar in open position.

- C. **Bottom Bar** is a rectangular shape extruded from 6063-alloy aluminum, attached to the bottom of the curtain. Includes rubber edge seal  $\frac{3}{4}'' \times \frac{3}{4}'' \times \text{opening width}$ , to form seal on counter top applications.

- D. **Barrel** is steel round tubing or pipe, 4 inch to  $4\frac{3}{4}''$  diameter, to contain counterbalance assembly to support the curtain with a maximum deflection of 0.03 inches per ft. of width. Counterbalance assembly consists of coiled tempered helical torsion spring mounted on a cold rolled steel shaft, rotating through a sealed bearing. Spring tensions adjustable by a 3" tension wheel on interior side of tension side head plate (internal tension & drive standard).

- E. **Brackets** are steel plates,  $\frac{3}{16}''$  minimum thickness, with 600 lb. sealed bearing on drive side, with retractable drive end (for ease of installation). Tension U clip on tension side for internal spring loading.

- F. **Guides** are extruded U-shaped aluminum from 6063-alloy aluminum, formed to retain curtain and fitted with wool pile strips. Face of wall applications: guides are attached to clear anodized aluminum angle jambs with  $\frac{1}{4}''$  machine screws spaced not more than 24" on center. Ceiling stops are provided on guides at pre-determined stop height. Between jamb application: guides to be mounted directly to pre-existing jambs ( $\frac{3}{16}'' \times 2''$  flat bar provided if needed).

- G. **Operation** is as indicated:

- MANUAL PUSH-UP – Lifting up/pulling down door with chrome handles assist on bottom bar.  
 AWNING CRANK – Removable telescoping handle operating a bracket-mounted reduction gearbox.  
 INTERNAL MOTOR – Torque and Nm. determined by sq. ft. of curtain (springing omitted with this option). Rocker control switch (NEMA 1) to be mounted into single gang junction box (by certified electrician).  
 FACE OF COIL MOUNTED MOTOR – GJ50 gear head operator with flush mounted key control stations.

- H. **Locking** is as indicated:

- a.  CYLINDER LOCK on the bottom bar (double throw-bolt activated by center thumb-turn or key, operable from inside, outside, or both sides of door, as indicated and shown on this submittal).  
i.  Keyed Cylinder Exterior  Thumb-Turn Cylinder Interior  Keyed Cylinder Inside  
 Standard Schlage Keyway cylinder  
 Best 7 pin interchangeable core cylinder (Medeco, KeyMark, Falcon, General, etc.)  
b.  SELF-LOCKING (through the gear reduction of the motor operator).

### **2.03 FINISHES**

- A. Aluminum curtain finish as indicated:

- Clear Anodized (standard)  Black Anodized  Dk. Bronze Anodized  RAL # \_\_\_\_\_  Wood Grain

- B. Bottom bar, Bottom bar cap/flange plate, and guides finish as indicated:

- Clear Anodized  Black Anodized  Dk. Bronze Anodized  RAL # \_\_\_\_\_  Wood Grain

- C. Exposed steel surfaces are painted with a rust-inhibiting gray or black primer on exterior applications.

## **PART 3 EXECUTIONS**

### **3.01 INSTALLATION**

- A. Doors are to be installed in accordance with Alumatec Pacific Products™ installation instructions and by authorized, and certified professional Alumatec Pacific Products™ door dealer.



1155 West 500 North  
Centerville, Utah 84014  
Tel: 801.298.0181 Fax: 801.298.0905  
Toll Free: 877.770.0181 ext 1

see us at  
**Sweets**.com

www.alumatecpp.com • info@alumatecpp.com • sales@alumatecpp.com



12718 E Indiana Ave  
Spokane, WA 99216  
(509) 821-2260 • (509) 821-5099 Fax  
www.continentaldoorco.com